

WithOnePlanet

- > Module 2:
Culture
- > Level:
Years 7 to 8
- > INQuIRY:
Investigate
- > Lesson 7:
The statistics
- > Student worksheet



Investigate

Lesson 7
Student worksheet
The statistics

Years **7** to **8**



WithOnePlanet.org.au

INQuIRY     

CC BY-NC-SA 4.0

WithOnePlanet

Climate change education
An xpanse Foundation initiative

The statistics

Lesson 6: Student worksheet

Introduction

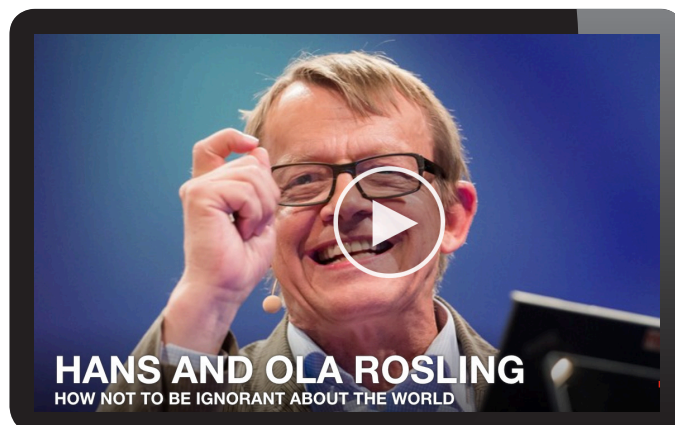
In our world, there are many differences based on our languages and cultures. There are also many things that are comparable between countries, such as yearly income, life expectancy, mortality rates of children under 5, and so on. In this lesson we will look at some of the figures from Australia, as well as from some of our closest neighbours in Asia, including Timor-Leste.

Activity 1: Overcoming our misconceptions

The Gapminder Foundation is an organisation that aims to help people find out about the actual facts in the world, as they have found that many people are ignorant of the facts of the world around them. You can read about the background to the project here: <http://www.gapminder.org/ignorance/>.



Watch the video *How not to be ignorant about the world*, from the founders of the Gapminder foundation: <http://www.gapminder.org/ignorance/> Watch the video, read information on the website and answer the following questions.



Q1: Were you surprised by any of the facts?

Q2: Can you think of a misconception you have about your immediate life?

Activity 2: Checking out the Gapminder website

Go to the Gapminder website at <http://www.gapminder.org/>.

On the main page, click on the *How to use* tab and watch the short 2-minute video on how to use the Gapminder graph on the website.

Activity 3: Where am I from?

Your teacher will hand out some *Where am I from?* cards, which have information from the Gapminder website on:

- > income per person
- > life expectancy
- > child mortality rates
- > number of children per woman
- > per cent of total literacy and cumulative CO2 emissions.

When you get a card, guess which country it is referring to. The answer will be one of the following countries:

- > Australia
- > China
- > India
- > New Zealand
- > Malaysia
- > Indonesia
- > Timor-Leste or
- > Papua New Guinea.

Once you have guessed, check your facts on the Gapminder website to see if you got it right.

Q1: Which countries you guessed correctly?

Sources:
(IKL to ADD)

Q2: Which countries were easiest to guess correctly?

Q3: Did you have any misconceptions about Australia and our closest neighbours that you were highlighted through this activity?

Activity 4: A closer look at Timor-Leste?

Look at some of the statistics from Timor-Leste on the WithOneSeed website, www.withoneseed.org.au/timor-leste, and answer the following questions.

Q1: How do the statistics on Timor-Leste compare with some of the other countries in the region?

Q2: What is one of the big problems during the wet season in Timor-Leste?

Q3: How is the WithOneSeed program working with farmers in Timor-Leste?

Sources:
(KL to ADD)

Q4: What benefits are the WithOneSeed program having for the community in Baguia?

Q5: What effect could this type of program have on the Timor-Leste statistics in the future?
